

# Turning Pendants

‘All about Jigs’

# Types of finished pendants



# Types of finished pendants



# Aims

- Consider variety of techniques to hold and turn pendants including:
  - Choice of wood
  - Use of jigs
  - Turning off centre
  - Finishing and colouring pendants
  - 'Findings' available
- Show the process for a pendant with off centred hole and one coloured / decorated pendant.



# Choice of wood

- For coloured pendants need fairly bland or white wood but with figure.
- For ones to be finished naturally need interesting figure or grain pattern.
- Softwood brings some difficulties – can feel insubstantial



# Preparing blanks from flat board

- From flat board
  - Sometimes useful to sand reverse side before mounting
- From square or turned round section
  - Easy to produce multiple blanks same size
  - Less of an issue removing from chuck – can use parting tool



# Jigs

- Homemade or Purchased?
- Lots of variations within the following
  - Jam chucks
  - Blanks 'fixed' onto screw chucks
- Key needs are
  - Secure ways of holding blank without damaging it
  - Reliable and repeatable off centering
  - Access to front and back or..
  - Accurate reversibility

# Purchased jigs



## PENDANT MAKING JIG

SKU: PENDANT JIG

£9.00

Size

Select

Quantity

1

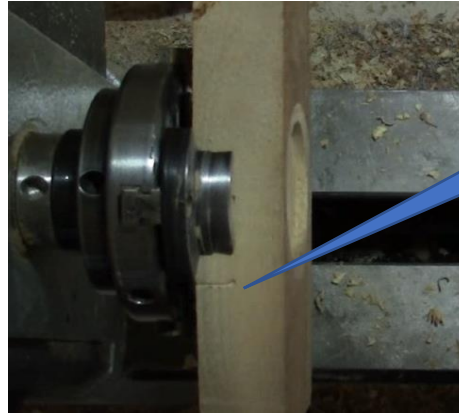
THESE PENDANT MAKING JIGS COME IN THREE SIZES SUITABLE FOR THE 2" 1 3/4" AND 1 1/2" RESIN AVAILABLE THROUGH WOODTURNING SUPPLIERS. PLEASE STATE WHICH SIZE YOU REQUIRE

1. **LARGE** - 2" PENDANT JIG
2. **MEDIUM** - 1 3/4" PENDANT JIG
3. **SMALL** - 1 1/2" PENDANT JIG



# Home made Jam chuck

- Straight piece of timber inserted into chuck that has had pair of opposite jaws removed.
- Requires blank disc of wood turning to exact diameter.
- Disc needs to protrude so spacer needed maybe
- Off centre capability easily achieved by clamping/marking wood in a different place.
- Centre with hole to allow a 'knock out' bar to remove tight fittings.
- This example has long 'wings' – feels quite dangerous.



Mark of 'off centre' position



# Home made flexible holder

- In this example seen on Youtube a special jig was made that is clamped in a chuck with large jaws
- The jig is turned and then cut into two halves but with elastic bands keeping it together prior to clamping in the chuck jaws
- Internally a groove is made to accommodate the rim of the wooden disc
- Jig reversible - two sides are different – one centred and one off centred
- Again disc is turned prior to using this jig but the dimensions are slightly less critical than the previous jam chuck



# Jig to ensure centering on both sides

- This home made jig uses a central hole drilled through the blank and registered on a protruding pin.
- The hole disappears as long as the later turned off centre hole is big enough to cover the pin hole
- Hot glue or double sided tape used to secure piece

Image from Youtube



# Jig turned to fit in screw chuck



My preferred choice



















# Alternative separation



Thin parting tool used to separate pendant – also allows greater access to back for sanding and finishing

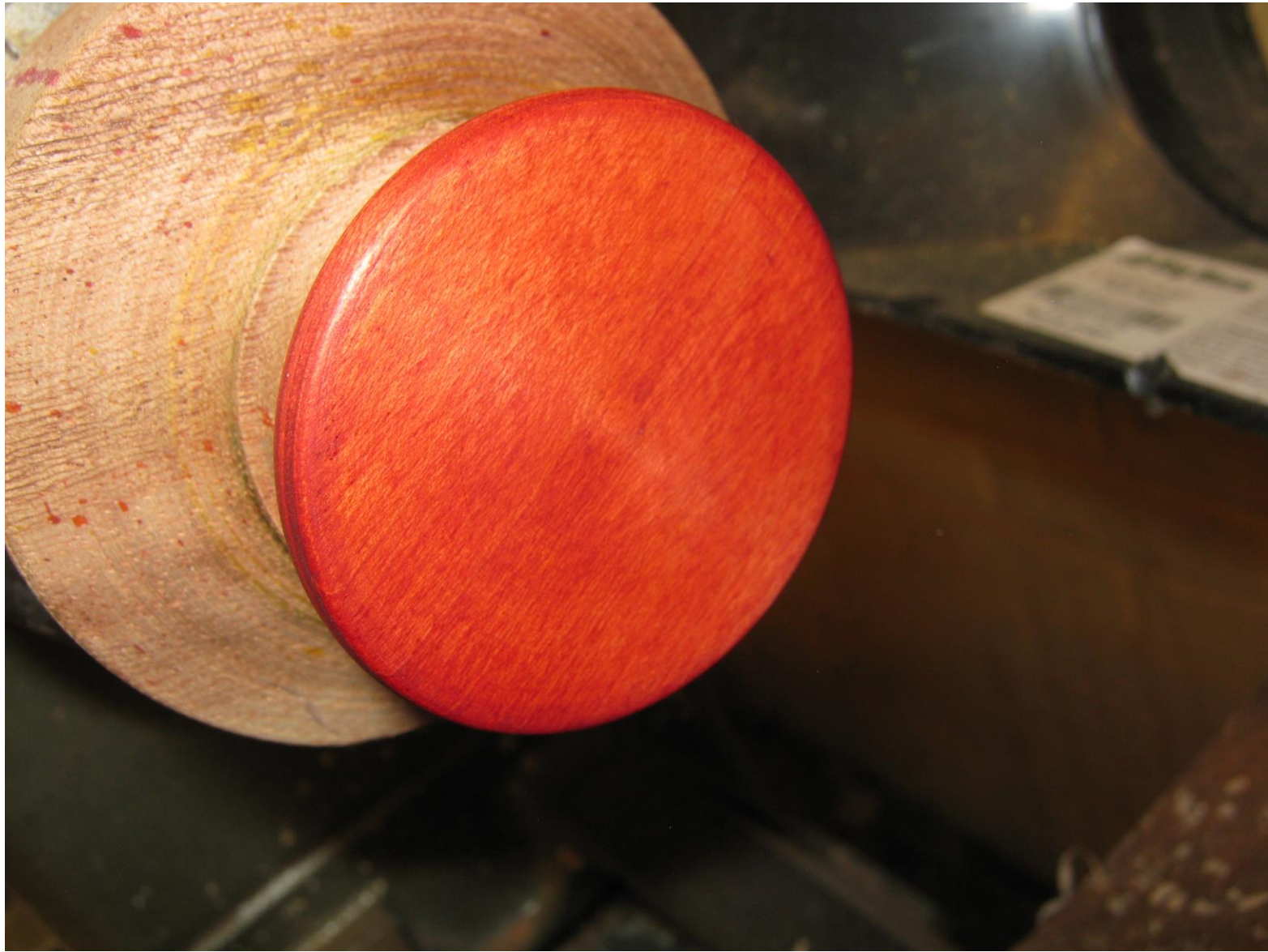




# Colouring and decorating

- My preference is for natural wood with grain – oiled and waxed
- For white wood, option is to colour and add further decoration
- Choice of spirit or water based colours
  - Spirit dyes dry quicker
    - Good on small items but issue if covering large areas
  - Water based colours raise grain
  - Water based have no odour
  - Water based can be more expensive















Changing off centre  
for a different effect



# 'Findings'

Lots available through ebay,  
Amazon etc





# Finishing

- Sand to 1200 going through all grits
  - If on lathe then sand by hand along grain occasionally and at end
  - Care needed with spalted wood
- Lacquer – spray 6 coats at least
- 4 coats oil and then wax
- Buff if possible



Filming..





# Useful links – need sifting and annotating

- <https://www.youtube.com/watch?v=veS1ILzfylA> Gary Rance
- [https://www.youtube.com/watch?v=RsEWEVmg\\_kE](https://www.youtube.com/watch?v=RsEWEVmg_kE)
- <https://www.youtube.com/watch?v=5QROt-WGr-k>
- <https://www.youtube.com/watch?v=rQ59OHQPkKs>
- <https://www.youtube.com/watch?v=Ow-zmI6SE40>
- <https://www.youtube.com/watch?v=yRhKZtxmurA> choices
- <https://www.youtube.com/watch?v=HMTqdpIMm3o&t=86s> coloured discs
- <https://www.youtube.com/watch?v=6bAcH9MYMHU>
- <https://www.youtube.com/watch?v=Tpq7KL3SL4s> uses pin
- <https://www.youtube.com/watch?v=aCdMgm6fZ6Q>
- <https://www.youtube.com/watch?v=vKHmByc-Tf4>
- [https://www.youtube.com/watch?v=nN\\_IoR-hxQ8](https://www.youtube.com/watch?v=nN_IoR-hxQ8)
- [https://www.youtube.com/watch?v=nN\\_IoR-hxQ8](https://www.youtube.com/watch?v=nN_IoR-hxQ8)
- <https://www.youtube.com/watch?v=rQ59OHQPkKs>